

THE COMPUTER CONNECTION  
SAUK COMPUTER USER GROUP

JULY 2010

VOLUME TWENTY  
NUMBER SEVEN

INSIDE THIS ISSUE:

JULY NEWS; SMART-COMPUTING TIPS & FUN FACTS	2
TIDBITS—WEBCAMS	3 & 7
ELIMINATING OBSOLETE WINDOWS DEVICE DRIVERS	4-5
FUN ON A GLOOMY DAY	6-7
COUNTING CELLS WITH SPECIFIC CHARACTERS	8
PRINTING MORE THAN ONE COPY	9

MINUTES: SCUG CLUB MEETING  
JUNE 12, 2010

The usual Question and Answer session started the monthly meeting which included a discussion on the properties of mice -- the electronic kind.

After a break for cookies and coffee or pop, the formal meeting started with around 30 people that included one new member and two visitors.

The minutes of the May meeting were approved as published in the Computer Connection and the **treasurer's report of Myron Kliment** was accepted as read.

Members were reminded that the July meeting will be the yearly cookout, with the club providing the meat and buns, Art will probably provide the condiments and drinks, and asking members to bring a dish **to pass. Members' spouses and significant others** are invited to attend.

There will be a Q&A session after the

meal, but no program will be presented.

Terry and Myron mentioned that help is still needed in the computer lab.

A motion for adjournment was made, seconded and passed.

President Neal conducted the raffle, after which Betty Beatty gave a most informative and interesting presentation on the use of Facebook. She mentioned that she created a web page (on the SCUG site) with links to more information about most of the things she talked about. After her presentation, a drawing was held for a **copy of "Facebook For Dummies,"** autographed by the authors, whom Betty had contacted after reading and enjoying their book. Also a copy of the 5/31/10 *Time* magazine with the Facebook cover story was raffled.

Respectfully submitted by  
Angela Rester, secretary

Club Information

Sauk Computer User Group

User Helping User  
3406 E. 19th St.  
Sterling, IL 61081

Neal Shipley - President  
n.shipley1@comcast.net

Website-

www.saukcomputerusergroup.org

SCUG Email-

saukcomputerusegroup@gmail.com

Printing done by

Joe Fornero

MINUTES: CLUB BOARD MEETING  
JUNE 15, 2010

**Board members met in Angela's home,** with Neal Shipley, Joe Fornero, Myron Kliment, Terry MacLennan, Joe Schmitt and Angela in attendance.

Under discussion were subjects like Media Player, items for drawings and supplies for the picnic in July. Also, whether or not to have a drawing then and it was decided to go ahead and have a raffle after the picnic.

Terry will be doing the program in August based on selling on E-bay.

All the members were in agreement that Betty did an excellent job on her Facebook presentation.

The meeting ended on a motion by Joe Schmitt and seconded by Joe Fornero.

Respectfully submitted by Angela  
Rester, secretary



## SMART COMPUTING TIPS & FUN FACTS

### JULY NEWS

Remember July will be our annual cookout. Betty said to think BOCA, but for the rest of you red blooded **American's I'll be cooking good** old beef hamburgers. Bring a dish to pass, the club will be providing the hamburgers and buns. Art will probably provide condiments and drinks. Invite your spouse or friend, we always have lots to eat and an enjoyable time. The cook is the only person who has to be out in the heat, the rest of you can enjoy the air conditioned comfort of the Whiteside Senior Center.

Bring any questions or computer **problems you're having for a** question and answer time after the business meeting. There will be no program this month

**This month's raffle main prize will** be a portable USB hub with some other misc items.

Joe Fornero—Editor

**Do I Need A Memory Card With My Digital Camera?:** You can get by without a memory card if your digicam provides onboard memory, and most do. Internal memory, however, is meant to supplement a memory card. Thus, most cameras only provide enough to hold 15 or so images. Although you can save money not buying a card, you'll spend considerable time transferring or deleting photos from internal memory to make room for new ones.

**Speed Things Up:** Radio clutter and router positioning can affect performance, but your router may also be set to accommodate legacy network protocols that slow it down. Today's routers often support 802.11b/g/n protocols, and their default settings allow all three devices to connect. But having 802.11b devices running on an 802.11g or 802.11n network will diminish performance all around. For best network-wide performance, use devices with the same Wi-Fi protocol and use router settings to restrict the 802.11 mode to that protocol. If you have 802.11n devices mixed in with 802.11b/g devices, consider getting a dual-band router. These newer models will put all of your

older 802.11 devices on the 2.4GHz radio band and let you run the 802.11n devices in pure "n" mode separately and on the much less cluttered 5GHz band.

**Colorize Black-&-White Photos:** You can use a photo-editing program to transform a colored photo into black and white, but you can further enhance it in many photo-editing programs by also adding splashes of color. Colorizing an item, such as a bride's wedding bouquet, puts emphasis on an important part of your photo and gives it an artistic flair. With most editing programs, colorizing requires you to select an item with a lasso tool and then change the color of the item with a paintbrush.

Reprinted with permission from *Smart Computing*. Visit [www.SmartComputing.com/groups](http://www.SmartComputing.com/groups) to learn what *Smart Computing* can do for you and your user group

Web cams are great tools to bridge long distances between you and your loved ones. Not only can you have a virtual face-to-face conversation with friends and family, but you can also get a sneak peek at new additions to the family or simply approve of **your friend's new haircut.**

Many Web cams feature the ability to add video effects (such as avatars and photographic filters), snap still photos, and create short videos to post online. Additionally, most Web cams integrate with popular instant messenger clients, such as Windows Live, Yahoo! Messenger, and Skype. Here's a look at some other features commonly found in Web cams.

## High Definition

**LifeCam Cinema**  
\$79.95  
Microsoft  
[www.microsoft.com](http://www.microsoft.com)



High-definition Web cams let you capture high-quality video. For instance, the Microsoft LifeCam Cinema has HD resolution (720p) plus ClearFrame technology and auto focus to help stream a clear and detailed image, even in low-light environments. Almost all Web cams have a digital microphone incorporated into the camera, and this particular one has noise-canceling technology to prevent background noise from interfering with the conversation.

Before you head out to purchase the latest and greatest HD Web

cam, note that the system requirements are higher for an HD Web cam than a standard-definition Web cam. So, check your computer system specifications to be sure they match up with the Web cam requirements. And although HD Web cams can deliver a high-quality picture, your network must have the speed to support it. Additionally, the chat program you are using might restrict some of the features offered by your HD Web cam.

## Video On The Go

**C905**  
\$99.99  
Logitech  
[www.logitech.com](http://www.logitech.com)



Frequent travelers, such as professionals, students, or retirees, who want to check in at home can benefit from a Web cam designed specifically for laptops. The Logitech Webcam C905 offers many of the same features Web cams designed for desktops have, such as HD video capture (720p), auto focus, and a noise-canceling digital microphone, but it comes with a clip specifically designed to attach to a thin laptop screen. **When you're home, you can also clip it to your desktop monitor.**

## Built-In Web Cams

**N61Jv**  
\$899  
Asus  
[www.asus.com](http://www.asus.com)



Rather than purchase both a new notebook and a Web cam, consider purchasing a notebook with a built-in Web cam. For example, the Asus N61Jv offers a 2MP (megapixel) camera planted in the top perimeter of the screen. Not only will you save yourself from purchasing an additional accessory, but you can also travel lighter.

## Set Up Surveillance

**Indoor Video Security Master System**  
\$299.99  
Logitech



[www.logitech.com](http://www.logitech.com)

**Outdoor Video Security Master System**  
\$299.99  
Logitech  
[www.logitech.com](http://www.logitech.com)



Some Web cams are designed for home surveillance, rather than video chatting. For example, some Web cams can be set up inside the home to check on pets and kids while **you're away.** Weather-resistant outdoor security Web cameras can be set up to guard against intruders. Like other Web cams, many surveillance cameras connect to the Web so you can periodically check in from any Internet connection.

(Continued on page 7)

Device drivers are programs that are designed to control (drive) specific types of hardware (devices) that are attached to your computer. These devices can be attached through wires or by wireless connections. No matter how the device is attached you need a program to tell it how to interact with the computer. An operating system such as Windows comes with myriads of device drivers built into it so when you bring your new computer home, attach your printers, external drives, etc., most of them work fine.

The caveat is that drivers are hardware dependent and operating system specific so your external CD-ROM, which worked flawlessly under Vista, may not work with Windows 7 until you install an updated device driver designed for the new OS.

Every operating system directs device drivers to communicate with their devices through the computer bus or a communications subsystem. It is a process which is largely invisible to those trying to get work done on the computer, much like the internal workings of an automobile are largely invisible to a driver trying to get from home to the grocery store.

The invisibility of device drivers is a good thing when everything is working smoothly, but it tends to hinder troubleshooting when trying to track down the cause of a problem. When you upgrade or change hardware, Windows **doesn't usually delete the old** device drivers. Sometimes these obsolete programs can cause hardware conflicts. Seemingly unrelated quirky behavior on the part of the computer can often be traced to a no longer used device driver.

Resolving device driver problems in Windows can be difficult. In this **article we're going to focus on** finding outdated device drivers and eliminating them from your system.

Manually searching for device drivers on a Windows system can be frustrating, time-consuming, and mostly a waste of effort. Conveniently for us, Microsoft has provided a way to locate unused device drivers and remove them.

The directions herein are designed specifically for Windows 7, but the general process will work for Vista and XP. There are slight variations in the process with each of the operating systems; just be careful **when reading each screen. Let's** get on with it.

The Device Manager as it comes from Microsoft is not set up to

display device drivers that are no longer being used. The Device Manager has to be configured to show obsolete drivers so we can remove them. You need to add something called a special Windows Environment Variable. This is a text string that contains a path, file name or drive. Programmers refer to this as a system **property. We don't really care** what they call it as long as it works.

1. From the **Start Menu**, right-click on **Computer**.
2. Select **Properties** at the bottom of the list.
3. From the **System** window, select **Advanced** system settings.
4. From the **System Properties** dialog box, select the **Environment Variables** button. (See illustration)
5. The **Environment Variables** dialog box contains two panels, **User variables** and **System variables**.
6. Click the **New...** button.
7. In the **New System Variable** dialog box, type: `devmgr_show_nonpre sent_devices`

8. Type 1 in the **Variable Value** text box.
9. Close all the dialog boxes.

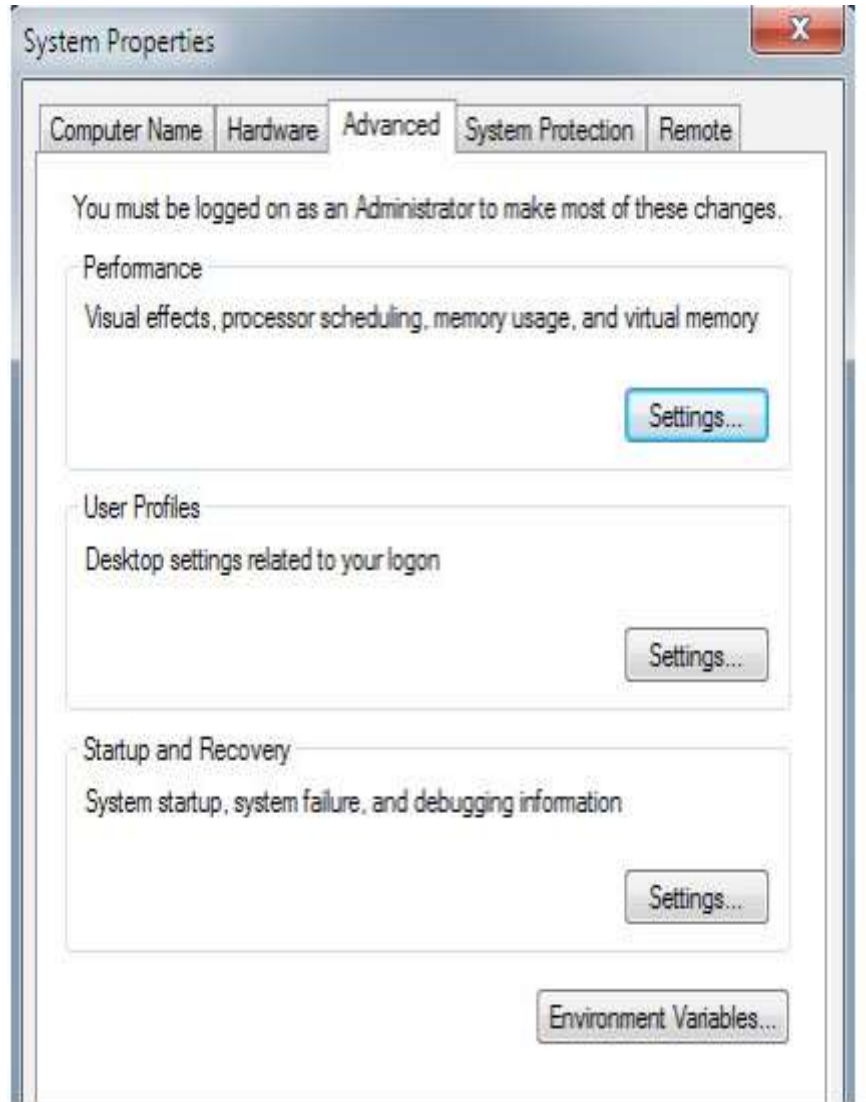
In most cases there is no need to **restart the system**. Let's test the results of our labor.

1. Access the **Start Menu**.
2. Right click **Computer**.
3. Select **Manage**.
4. When the **Computer Management** window appears, select **Device Manager**.
5. Open the **View** menu and select **Show Hidden Devices**.

From now on whenever you open a branch within the Device Manager tree structure and device icons are "grayed out" or appear faded, these are the unused drivers. You can safely delete them. Whenever you add, remove or change your hardware configuration, always check for left over drivers and avoid problems.

By Vinny La Bash, Regular Contributor,  
Sarasota Personal Computer Users Group,  
Inc., Florida  
www.spcug.org  
vlbash (at) comcast.net

This article has been obtained from APCUG **with the author's permission for publication** by APCUG member groups; all other uses require the permission of the author (see e-mail address above).



*Editor's note make sure you make a restore point before you do this. Not sure if this caused my printer not to work or some other update. I had to do a system restore and then everything was fine.*

Many of you will remember those white-faced disks with the cute little colorful penguin that Betty gave out at a presentation she gave concerning **Ubuntu** Linux for human beings, version 9.04.

Also many among us, I **included, were “fearful”** of attempting to use them on our single ridden hard drive computer and at the time, rightly so. Growing older now, or better said growing bolder, **I now take the time to “read the book.”**

Actually it was much simpler than that. Because after **“doing it the wrong way”** putting the CD in the drive after my computer was up and running the program informed me I would need to **restart** the computer with the CD already in the drive which of course it now was.

Now, after restarting, a screen appears listing 61 odd languages English, the default, already highlighted, Oh, what to do? You guessed it. Just press the ENTER key. Or if you wait long enough the program will make that choice for you.

Setting back, for less than a minute, I watched a colorful **screen that ‘obviously’ must** be placing some info on my hard drive. I afterwards have determined, not seeing any

presence of Ubuntu info remaining after shutdown, that it could not be much more than a **‘temporary’ cookie, the program** still needing to go through this **‘one minute loading process’** every time I've since used it..

After this, less than a minute wait, another colorful screen will appear. Several clear choices are now listed near the middle of the screen. I highly recommend the first choice; the others having previously warned me of difficulties when using only one hard drive, ntfs file partitions, etc. The top choice is **“Try Ubuntu without any change to your computer.”** I would not, until you became more familiar with the program, make any of the following four choices.

**“Install Ubuntu”, “Check disc for defects”, “Test memory”, “Boot from first hard disk”**

*(NOTE: If you want to check out the function keys at bottom do that now starting with the F1 key before making choice.)*

Now the FUN begins. Pick **Applications** at top of screen and **Games** from the pull down menu. Then pick, from its pull down menu **Mahjongg**. The game picture being rather small can next be made a suitable size by clicking on the little square between the minus and the times in the upper right section of the small window in which the game appears. A long explanation of a process most of us are already aware of but in my case after playing the smaller picture of the

game I had used for several times before I wised up.

A few of the benefits resulting in playing this game I feel are worth mentioning.

First of which is using of some of the other languages that appear in the first static screen. Exposure to the similarities and/or differences in them gives one various amounts of knowledge, though limited, to other cultures. For instance in viewing Japanese hieroglyphics representing words or worldly features that some will recognize as somewhat like the icons experienced when using some of the more complex computer programs. Another language, Hebrew, might tickle **one’s fancy when thinking of** our common ancestral beliefs.

A second benefit might be considered a memory exercise. Although hiding and memorization, a part of some of the children's games, is not used, at the start of Mahjongg, the many places one must look and see the slight differences in the tile pictures approximate the hide and memory feature but be a more adult like hidden and memorizing equivalent.

Then a feature that I personally appreciate, is this. There is such a large array of tiles at the game’s start that even after searching I could not see any matches. I mean even after several minutes of searching.

Now at those times, at first, I had trouble making my eyes move around fast enough to keep up with my remembering where I had seen a common tile. It came to the point at which I felt there were no matching tiles to be chosen.

Later, as of now, it has become much less of a problem. However, at those times, I now use a **HINT key** appearing in the upper tool bar where upon the suggested next tiles to be moved will be highlighted. At a more necessary and/or convenient time a similar feature can often crop up. That being near the end of a game with only a few tiles remaining you could **see a window pop up “saying” There are no more moves** and at that time are shown two choices, along with others, **“Do you want to restart this same game?”** or, the choice that I like, **“Do you want to shuffle?”** Upon responding YES each of the remaining tiles, which now are few, change their icon so you now may ‘win’. Some might instead say ‘cheat’ but the program mercifully congratulates you and gives you a time it took and your **place in the winner’s circle**. It was only recently that I noticed the **HINT key** and now use it about half the time. I suppose that using it is like keeping a thesaurus handy while doing crossword puzzle.

For those with younger or more curious minds I highly suggest

that if you have or are still able to get one of the Ubuntu CDRoms from Betty, do so. Especially because what I have rambled on about is an almost insignificant part of this CDRom. The program desktop starts with 6 pull down menus but from there on you cannot imagine, unless you have **already “got your feet wet” using** it how comprehensive this little CDRom is and how simple it is to use.

The first pull down menu, a part of which I’ve become familiar with, is labeled **Applications** consisting of items **Accessories, Games, Graphics, Internet, Office, Sound & Video** and **Add/Remove Applications**. Each of the first 6, when picked, result in their own pull down menus having in sequence 10, 17, 4, 7, 5 and 4 choices.

The second pull down menu labeled **Places** consisting of items **Home Folder, Desktop, Documents, Music, Pictures, Videos, Computer, 122.9 GB Media (My hard drive), UDF Volume, Floppy Drive, Network, Connect to Server, Search for Files & Recent Documents**.

The third pull down menu labeled **System** consisting of items **Preferences, Administration, Help and Support, About GNOME** and **About Ubuntu**, Preferences has 22 items in its pull down menu and Administration has 19.

The fourth and fifth pull down menus are labeled, when picked, **Firefox Web Browser - Browse the World Wide Web** and **Evolution Mail - read and write emails**.

This, at present, is my knowledge and understanding of this FREE and terrific CDRom. **Thank you Betty** for exposing me to it and enlightening me to its’ possibilities.

W E B C A M S ( C O N T . )

With setups such as the Logitech Indoor Video Security Master System or Outdoor Video Security Master System, you can also configure the system to send you emails and text messages if the camera detects any motion. Both the indoor and outdoor Logitech cameras connect to the Web using HomePlug technology, which delivers a connection to your computer through powerline networking. Once you have downloaded **Logitech’s Command Center** software, you just plug your camera into an electrical wall socket, insert the HomePlug USB adapter into a USB port in your computer, and then plug its power cord into a wall socket.

*Compiled by Tessa Warner Breneman  
Graphics & Design by Lori Garris*  
Reprinted with permission from *Smart Computing*. Visit [www.SmartComputing.com/groups](http://www.SmartComputing.com/groups) to learn what *Smart Computing* can do for you and your user group

## COUNTING CELLS WITH SPECIFIC CHARACTERS

Let's say that you have a Microsoft Excel worksheet that contains all the people who have ever worked in your department. Each name is prefaced by a single character that indicates the status of the person. For instance, if Fred Davis were retired, his name might show up as "RFred Davis". With quite a lot of these names in the worksheet, you may need a way to count those people with a specific status character.

The easiest way to accomplish this is to use the COUNTIF function. If, for instance, the status character is the letter R (for "retired"), and your range of names is in cells A5:A52, then you could use the following to determine which cells begin with the letter R:

```
=COUNTIF(A5:A52,"R*")
```

The formula works because the comparison value is R\*, which means "the letter R followed by any other characters." Excel dutifully returns the count. To search for a different status character, simply replace R with the desired status character.

Obviously, if the asterisk has a special meaning in this usage, you can't search directly for an asterisk. Actually, there are three characters you cannot search for directly: the asterisk (\*), the question mark (?) and the tilde (~). If you want to search for any of these characters, you must precede the character with the tilde. Thus, if you wanted to determine a count of names that had a question mark as a status code, you could use the following:

```
=COUNTIF(A5:A52,"~?*")
```

An alternative to using COUNTIF is to create an array formula that is applied to every cell in the range. The following will do the trick very nicely:

```
=SUM(LEFT(A5:A52,1)="R")*1)
```

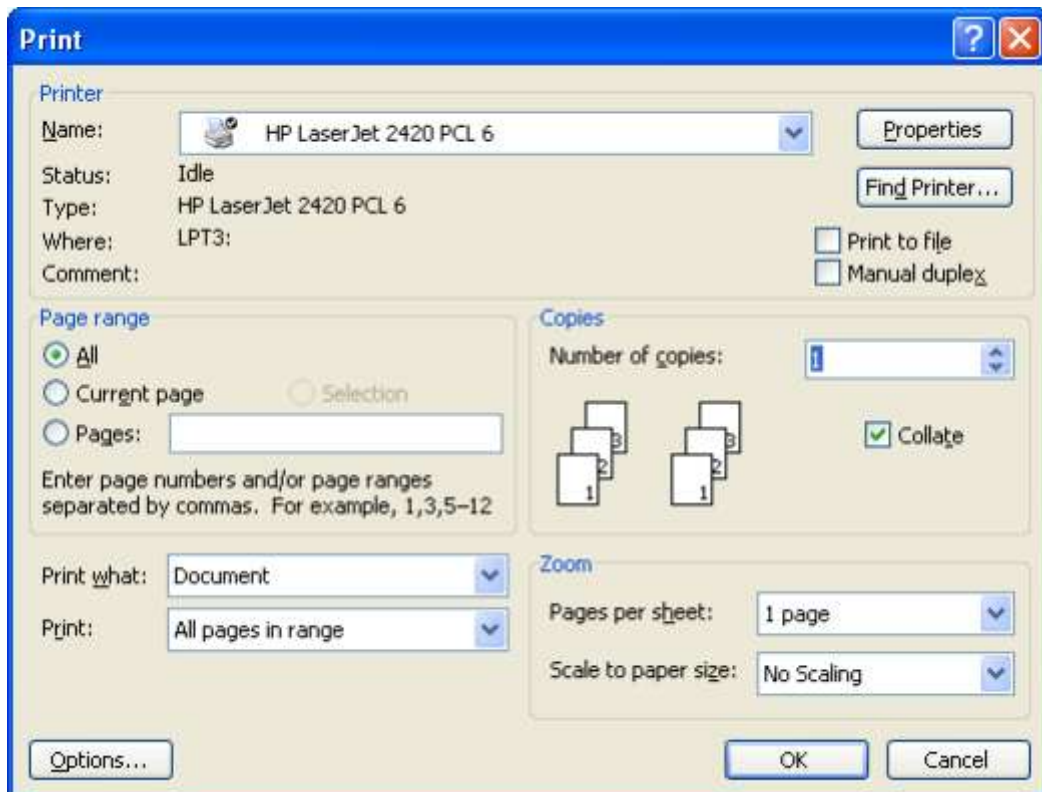
This must, of course, be entered as an array formula. This means that instead of pressing **ENTER** at the end of the formula, you would press **SHIFT+CTRL+ENTER**. The formula checks the left-most character of a cell, returning the value TRUE if it is R or FALSE if it is not. The multiplication is done to convert the TRUE/FALSE value to a number, either 1 for TRUE or 0 for FALSE. The SUM function returns the sum, or count, of all the cells that meet the criteria.

Copyright © 2010 by Sharon Parq Associates, Inc. Reprinted by permission. Thousands of free Microsoft Excel tips can be found online at <http://excel.tips.net>.

## PRINTING MORE THAN ONE COPY

Microsoft Word gives you complete control over how it prints your document. If desired, you can print more than one copy of your document. To print to a file, follow these steps:

1. Choose Print from the File menu. You will see the Print dialog box. (To display the Print dialog box in Word 2007, click the Office button and then click Print.) A really quick way to display the Print dialog box is to simply press **Ctrl+P**.



*The Print dialog box.*

2. In the Copies box, indicate the number of copies you want to print.
3. In the Range box, specify what you want to print.
4. Check the status of the Collate option. (Select or clear the option based on whether you want the pages of each copy printed in order or not.)
5. Click on OK.

Sauk Computer User Group  
User Helping User  
3406 E. 19th St.  
Sterling, IL 61081

There will be a Question & Answer  
Session starting around 2PM.  
Bring any questions you have about  
your computer or problems you may  
be having. It will be conducted by:  
**Neal Shipley & Art Bendick**



Notice

The next meeting of the Sauk  
Computer User Group will be

**July 10, 2010**

Cook out and potluck: 12 PM

Business: 1:30 P.M.

Question & Answer: 2:00 P.M.

Place: **Whiteside Senior Center**

**1207 West 9th Street**

**Sterling, Illinois 61081**

JULY'S MEETING THEME: COOKOUT & POTLUCK